



SPITFIRE
DOORS

THE ART OF PERFECTION

S-500

WELCOME TO THE SPITFIRE DOORS
S-500 SERIES.
THE WORLD'S MOST EXCLUSIVE
COLLECTION OF LUXURY RESIDENTIAL
ENTRANCE DOORS.

Our doors are works of art, hand-made exclusively for you by our team of highly skilled designers and craftspeople.

Our unique door collections exhibit an extraordinary investment in time, passion and craftsmanship. Our in-house designers are inspired by the potential they see in combining exclusive materials with simplistic engineering precision. Their intuitive creativity is manifested not only by their superb attention to detail but also by producing technically outstanding doors, that we guarantee will excel in all weather conditions, day after day, for decades.

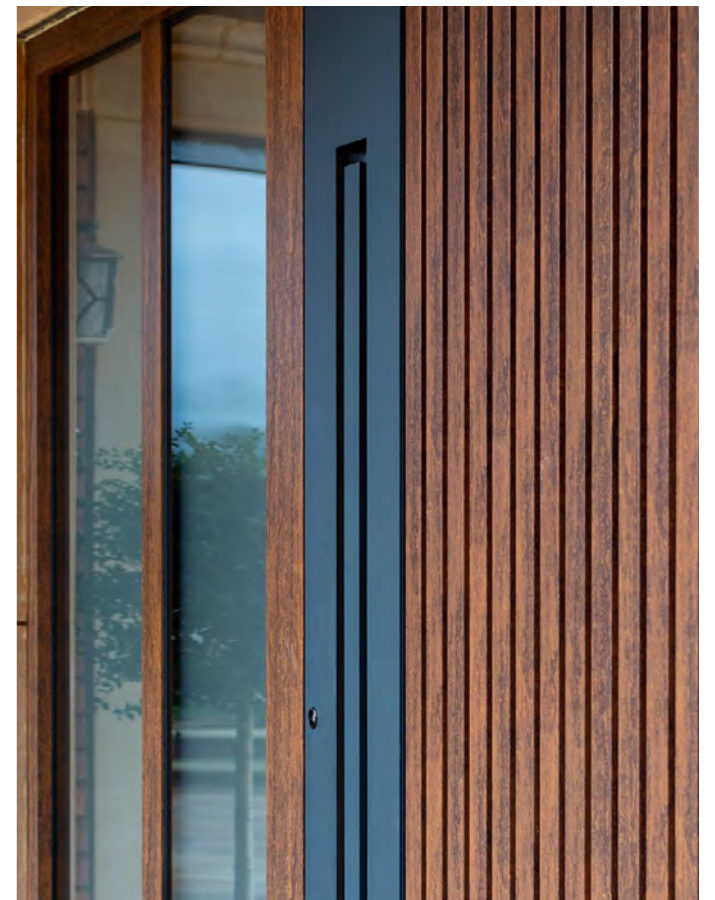
In constructing World Class entrance doors, our designers push the boundaries of what is possible and through their unbridled innovation we continue to challenge established protocols, whilst respecting the craft of our gifted assembly technicians.

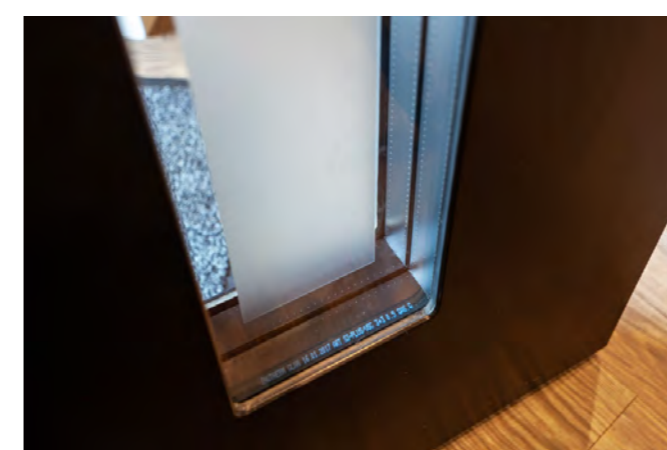


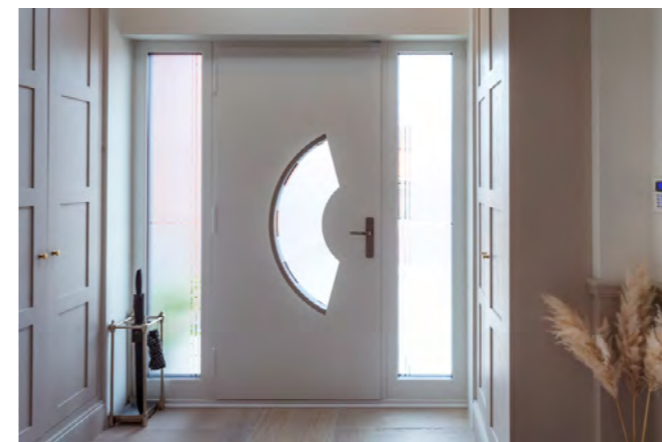
THE ART OF PERFECTION

"Design is not just what it looks like
and feels like. Design is how it works".
- Steve Jobs, co-founder of Apple, Inc.

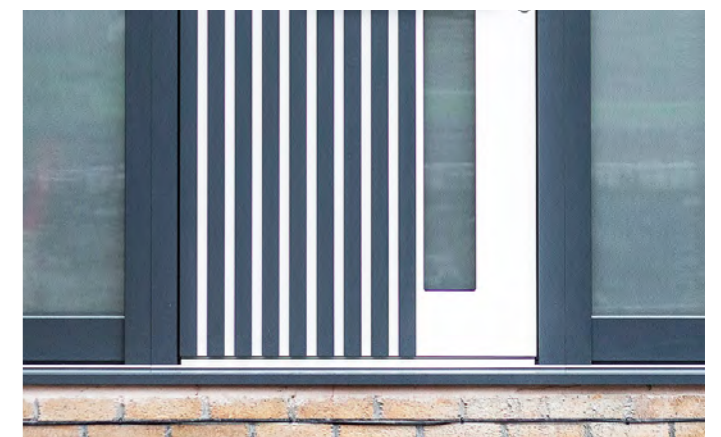
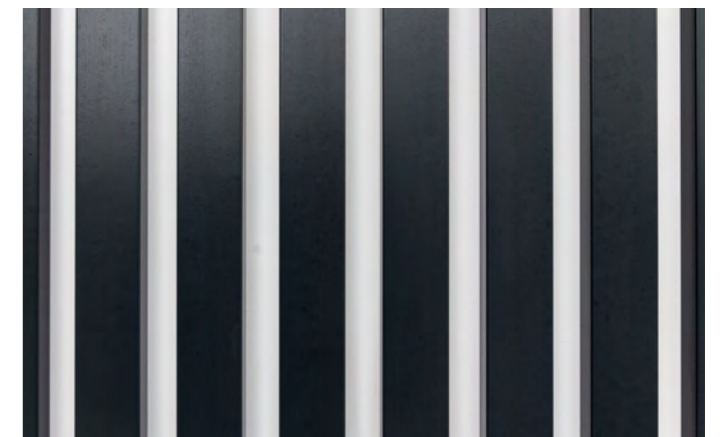


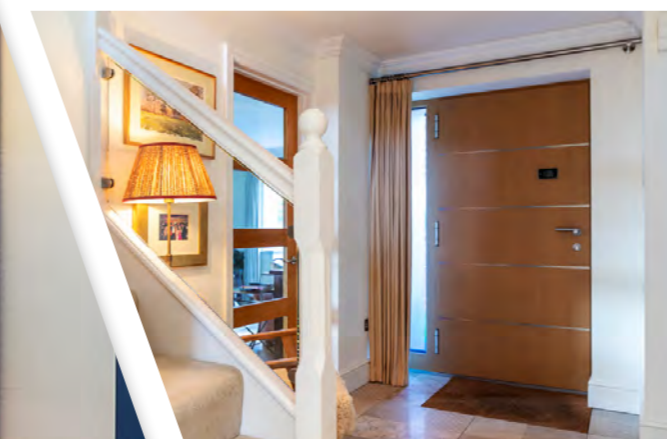










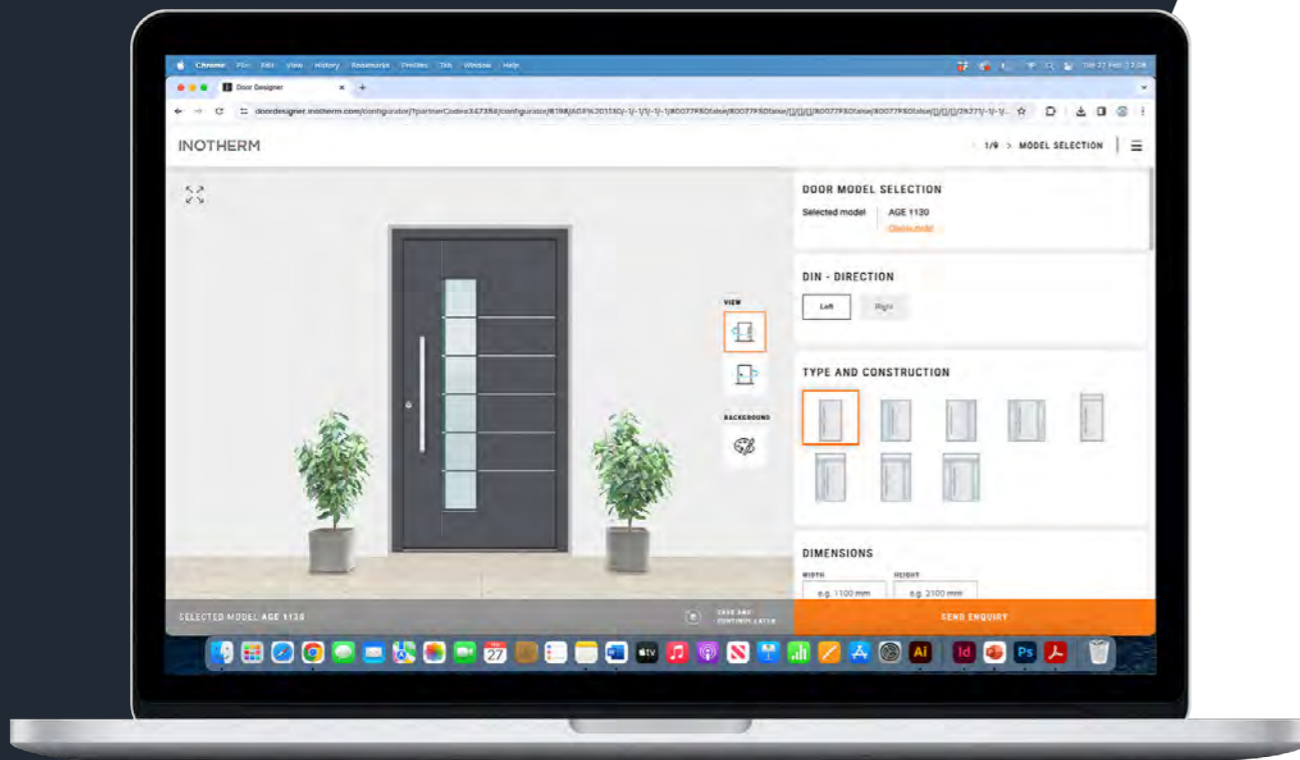


CREATE YOUR UNIQUE DOOR

Our easy to use door configurator allows you to create your perfect S-500 aluminium front door.

Easily choose from hundreds of colours and finishes, from subtle glass designs to a choice of handles with built-in LED's, plus highly secure locking systems. If you fancy adding a touch of glamour, why not decorate your door with Swarovski® crystals or place them within the glass units? And for the ultimate door, which will make accessing your door easier and your friends jealous, specify electronic locking/unlocking with our state-of-the art biometric fingerprint reader.

Our biometric readers are extremely easy to programme via our mobile phone App.



Website door configurator

BIOMETRIC ENTRY SYSTEMS



Our biometric fingerprint opening systems are secure, flexible and totally reliable and are programmed via your mobile phone using a new InoSmart App. No more fumbling for keys or letting the kids in after their late night antics. Most of the doors we sell have fingerprint readers discreetly embedded in the external pull bar handle.

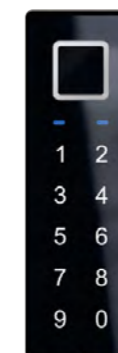
Most popular



BT620

Fingerprint Reader

- Discreetly embedded within the external pullbar
- Can be opened by finger or mobile phone
- Handle has LED backlight



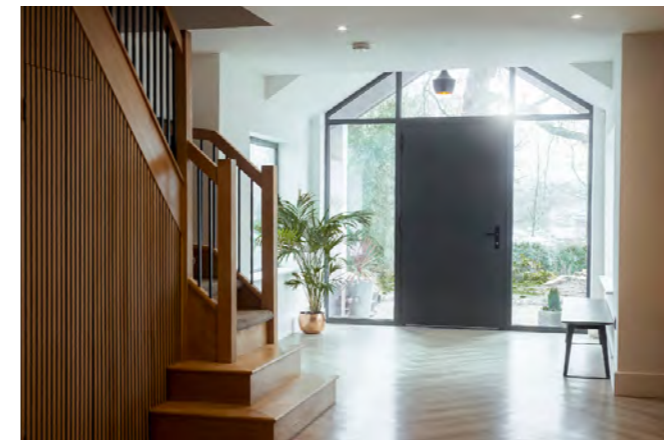
BT610

Fingerprint Reader and Codepad

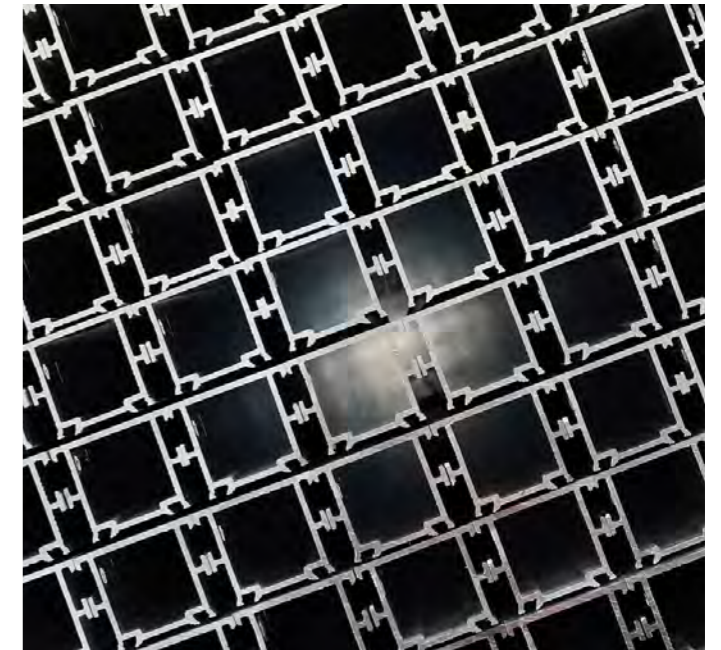
- Embedded within the external pullbar
- Can be opened by finger, codepad or mobile phone
- Handle has LED backlight

SPECIFICATION

Patented Design, Guaranteed Security, Excellent Weather Resistance and Amazing Thermal Values.



THE ART OF PERFECTION



“Strive for perfection in everything you do. Take the best that exists and make it better. When it does not exist, design it.”
- Sir Henry Royce



AGE 1044

INSTALLATION SERVICE

On receipt of your enquiry, we will immediately send it to your local Spitfire Doors Partner, who will liaise with you to discuss design options, specification criteria and the general suitability of the door for your home.

Our Partners are all privately owned companies, renowned for excellent customer service. They will install your Spitfire door and provide you with a caring and reliable after sales service.



To find the nearest showroom to you visit:
spitfiredoors.co.uk/spitfire-showrooms



THE FINEST DOORS IN EUROPE
Select from a huge range of RAL colours and textured finishes,
wood, rust effects or glass.





S-500 SERIES DOOR
Available up to 1400mm wide
providing a clear opening
of 1260mm

PIVOT DOOR
Comparable door at 1400mm
wide provides a clear opening
of 990mm

NEW EXTRA WIDE DOORS

Available with standard hinges
in bespoke sizes up to 1400mm wide.
This allows for a greater clear opening
that a comparable Pivot door.

This model has a discreet panelled
sidelight with LED lighting.

S-500



SPITFIRE
DOORS

March 2024